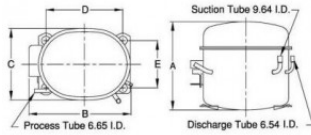


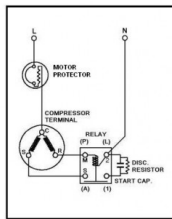


**PRINCIPAL DIMENSIONS - MM**



A: 216    B: 216    C: 155    D: 165    E: 102

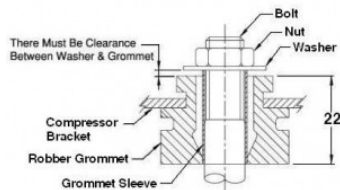
**SCHEMATIC WIRING DIAGRAM C.S.I.R.**



**SCHEMATIC WIRING DIAGRAM -**

-

**MOUNTING KIT**



Since we are constantly improving our product , the specification are subject to change without notice.

Electrical : 220-240 V/ 50 Hz., - V/ - Hz. 1 Phase - HP

**Nominal Performance**

Capacity	1,190 / - Watts
	4,060 / - BTU/Hr
	1,023 / - Kcal/Hr
Power Input	575 / - Watts
Locked Rotor Amps	24.00 / - Amps
Max Continuous Current	- / - Amps
Rated Load Amps	3.50 / - Amps
COP	2.07 / - Watts / Watts
EER	7.06 / - BTU/W-Hr

**Testing Conditions**

Condensing Temperature	54.40 °C	129.92 °F
Evaporating Temperature	7.20 / - °C	44.96 / - °F
Liquid Temperature	46.10 °C	114.98 °F
Return Gas Temperature	35.00 °C	95.00 °F
Ambient Temperature	35.00 °C	95.00 °F

**Application**

Evaporating Temp. Range	HBP	@ -6.70 °C to 12.70 °C (19.94 F to 54.86 °F)
	Heat Pump	- °C to - °C (- °F to - °F)

Refrigerant	R134a
Refrigerant Flow Control	Capillary Tube
Compressor Cooling	Fan

**Compressor and Motor data**

Compressor Type	Reciprocating
Displacement	14.14 cc.
Oil Type	Polyolester Oil
Oil Charge	450 cc.
Motor Type	C.S.I.R. ;2 Pole 2850 / - r/m
Voltage Range	187-264/- Volts 50/- Hz.

**Winding Resistance at 25 ° C**

Start	17.57 Ohms
Run	4.10 Ohms
Weight with Oil	11.97 Kg.
Weight with Oil and Accessories	12.42 Kg.

**Electrical Components**

Motor Protector	
Type	External 3/4"
Model Number	KME660-24/C
Open / Close	115-125 / 78-60 ° C
1st Cycle trip at 25 ° C	11.40 Amps(main) - Amps(start)

**Motor Starter**

Type	Current Relay
Model Number	KME684-7
Pick Up (max.)	7.70 Amps
Drop Out (min.)	6.75 Amps
Terminal Cover	4040KMD901-12
Start Capacitor	36-43 µF 330 VAC.
Disch Resistor for Start Cap	15000 Ohms 2 W
Run Capacitor	- µF - VAC.

**Mounting Kit**

Rubber Grommet	4007KMD905-3
Sleeve Grommet	3KMD903-2-Z
Washer	4023KEB387

REV. DATE 18-11-2017    C / N No. 0449/17

**Certificate Marks**

