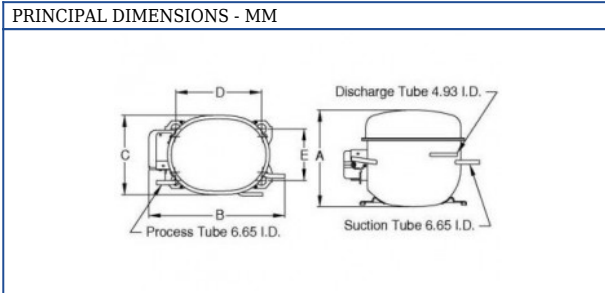


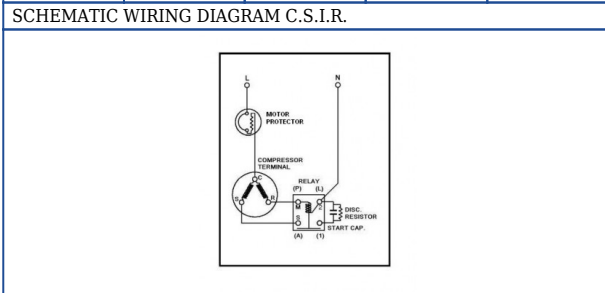


**KULTHORN KIRBY
PUBLIC COMPANY LIMITED**

**HERMETIC
COMPRESSOR
MODEL : AE 2390Y
BOM ID : S45-A0
High Torque Start**



A: 176 B: 262 C: 155 D: 165 E: 102



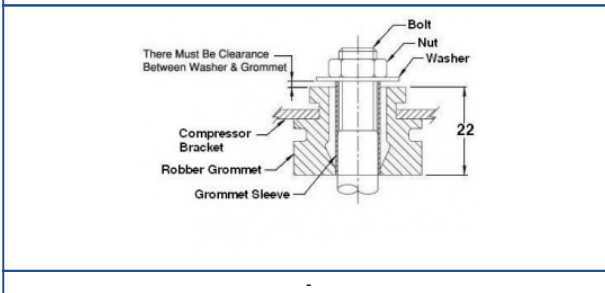
-

SCHEMATIC WIRING DIAGRAM -

-

-

MOUNTING KIT



-

Electrical : 220-240 V/ 50 Hz., - V/ - Hz. 1 Phase - HP

Nominal Performance

Capacity	237 / - Watts	809 / - BTU/Hr	204 / - Kcal/Hr
Power Input	197 / - Watts		
Locked Rotor Amps	8.00 / - Amps		
Max Continuous Current	- / - Amps		
Rated Load Amps	1.30 / - Amps		
COP	1.20 / - Watts / Watts		
EER	4.10 / - BTU/W-Hr		

Testing Conditions

Condensing Temperature	54.40 °C	129.90 °F
Evaporating Temperature	-23.30 / - °C	-9.90 / - °F
Liquid Temperature	32.20 °C	90.00 °F
Return Gas Temperature	32.20 °C	90.00 °F
Ambient Temperature	32.20 °C	90.00 °F

Application

Evaporating Temp. Range	LBP	@ -40.00 °C to -12.20 °C (-40.00 F to 10.00 °F)
	Heat Pump	- °C to - °C (- °F to - °F)

Refrigerant	R134a
Refrigerant Flow Control	Capillary Tube
Compressor Cooling	Fan

Compressor and Motor data

Compressor Type	Reciprocating
Displacement	8.1 cc.
Oil Type	Polyolester Oil
Oil Charge	300 cc.
Motor Type	C.S.I.R. ;2 Pole 2850 / - r/m
Voltage Range	187-264/- Volts 50/- Hz.
Winding Resistance at 25 ° C	
Start	44.91 Ohms
Run	12.00 Ohms
Weight with Oil	9.00 Kg.
Weight with Oil and Accessories	9.45 Kg.

Electrical Components

Motor Protector	
Type	External 3/4"
Model Number	KME660-21/C
Open / Close	100-110 / 78-60 ° C
1st Cycle trip at 25 ° C	8.00 Amps(main) - Amps(start)
Motor Starter	
Type	Current Relay
Model Number	KME684-12
Pick Up (max.)	4.60 Amps
Drop Out (min.)	4.00 Amps
Terminal Cover	4040KMD901-12
Start Capacitor	36-43 µF 330 VAC.
Disch Resistor for Start Cap	15000 Ohms 2 W
Run Capacitor	- µF - VAC.

Mounting Kit

Rubber Grommet	4007KMD905-3
Sleeve Grommet	3KMD903-2-Z
Washer	4023KEB387

Since we are constantly improving our product , the specification are subject to change without notice.

REV. DATE 20-04-2016 C / N No. 0128/16

Certificate Marks



COMPRESSOR PERFORMANCE TABLE